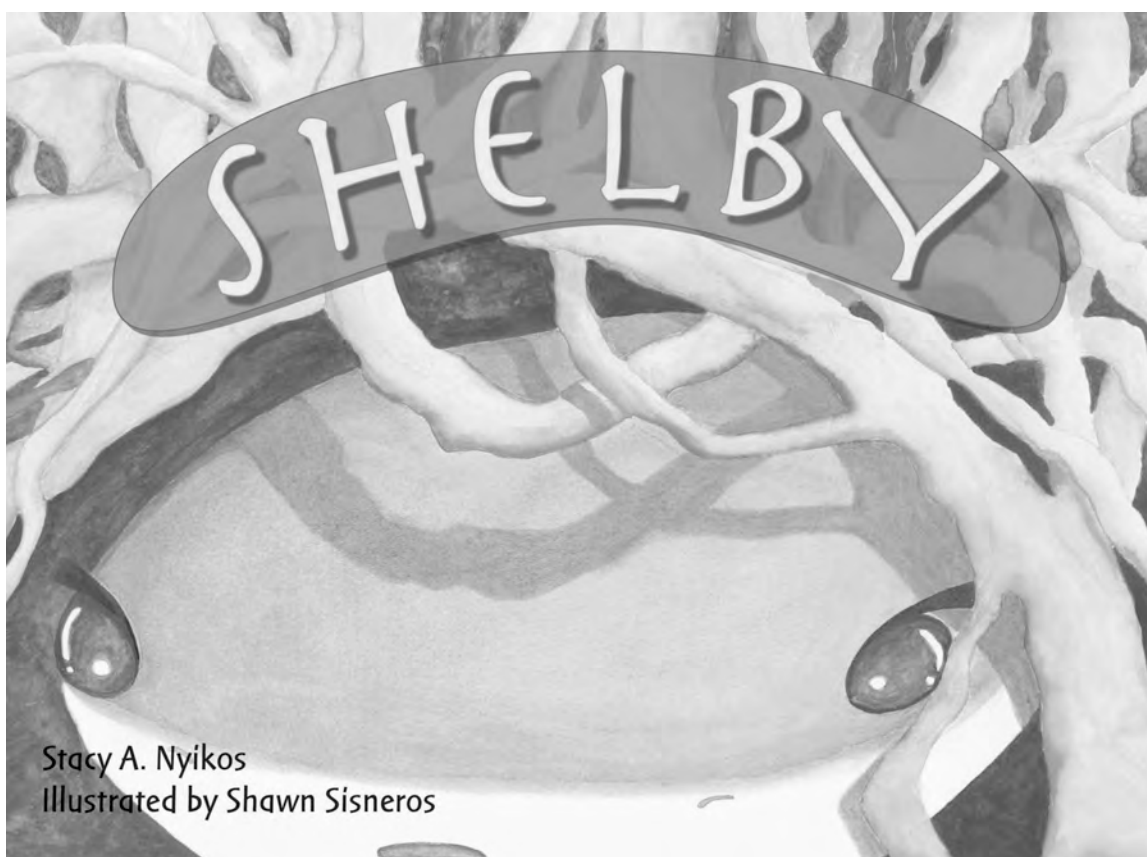


SUPPLEMENTARY MATERIAL FOR



ISBN: 0976419912

RETAIL: \$15.95

INSIDE: LANGUAGE TRIVIAL PURSUIT, REFERENCES, HOW TO DRAW SHELBY,
TWO COLORING PAGES. VISIT OUR WEBSITE FOR A FUN WRITING
ASSIGNMENT, TOO!

WE ALSO HAVE SUPPLEMENTARY MATERIALS FOR "SQUIRT," THE FIRST BOOK
IN OUR AQUATIC SERIES. PLEASE VISIT OUR WEBSITE TO DOWNLOAD THESE
FOR FREE.

WWW.STONEHORSEUBLISHING.COM

SHELBY WRITING PROJECT

1. Choose a type of shark to be:



Leopard shark



Great White



Bull Shark

2. Create a character

Character development:

- a. Where do you live?
- b. What do you like to eat?
- c. What do you do for fun?
- d. Do you live in a group or alone?
- e. What particular characteristics make you different from other sharks?
- f. Who are your enemies?
- g. Do you have any offspring?
- h. What is your name?
- i. How do you communicate?

Use the library, internet, aquarium, and anyone you know who might know something about your shark. Be creative!

3. When you have created a character, write your story that begins with:

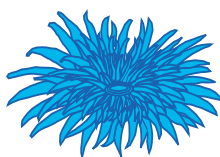
"My teeth are too big for my mouth. My mouth is too big for my head. I am going to ..."

4. Remember to have a beginning, middle and end!

5. Practice reading your story out loud with other students in the class. Help each other spell check and correct for grammar.

SHELBY TRIVIAL PURSUIT

1. Where does Shelby live?
 - A. Arctic Ocean
 - B. Mississippi River
 - C. Lake Pontchartrain
 - D. Mangrove Ocean Swamp
2. What was the barnacled beast?
 - A. Clouds
 - B. Whale Shark
 - C. Boat
 - D. School of Fish
3. Pigfish are related to pigs
 - A. True
 - B. False
4. What did the barnacled beast drop?
 - A. Bed
 - B. Flag
 - C. Blanket
 - D. Net
5. What did the fish do?
 - A. They didn't see the net
 - B. Bounced on the net
 - C. Chewed a hole in the net
 - D. Blew bubbles through the net
6. Where did Shelby hide?
 - A. In her tree
 - B. In an old boot
 - C. In seaweed
 - D. In a cave
7. Did the net
 - A. Eat the fish
 - B. Tickle the fish
 - C. Catch the fish
 - D. Holler yahoo!
8. Who came to help the fish first?
 - A. Police department
 - B. Dolphin
 - C. Eel
 - D. Shelby
9. What colors are the eel?
 - A. Purple and blue
 - B. Orange and brown
 - C. Grey and white
 - D. Red and yellow-green
10. Why did the dolphin need to go up?
 - A. He needed air
 - B. He needed a hamburger
 - C. He wanted to do a flip
 - D. He wanted to swim
11. Why did Shelby help the dolphin and eel?
 - A. They called her
 - B. She saw they need her help
 - C. She was hungry and wanted to eat the fish
 - D. She needed to floss her teeth
12. What is courage?
 - A. The sound a sea lion makes
 - B. Chomping holes in nets
 - C. Swimming fast
 - D. Doing something even if you are scared
13. Cowfish have horns on their heads
 - A. True
 - B. False
14. What does Shelby find when she saves the fish?
 - A. Dinner
 - B. Lunch
 - C. Friends
 - D. Courage
 - E. Both C and D
15. Lemon sharks eat lemons
 - A. True
 - B. False
16. How long can lemon sharks grow?
 - A. 100 feet
 - B. 2 feet
 - C. 8 to 10 feet
 - D. 17 feet



17. Shark have bones

- A. True
- B. False



18. How long do sharks live in the wild?

- A. 2 days
- B. 2 years
- C. 50 years
- D. 100 years



19. Where do lemon sharks live?

- A. In orchards
- B. In lemon trees
- C. In the Atlantic and Pacific Oceans
- D. In the North Sea

20. What do lemon sharks eat?

- A. License plates
- B. Cowfish
- C. Porcupine fish
- D. Sea birds
- E. All of the above



21. Where are lemon sharks born?

- A. In the ocean hospital
- B. In protected sounds and bays
- C. From eggs
- D. In lakes



22. How long do lemon sharks stay in their nurseries?

- A. 1 week
- B. 1 year
- C. Many years
- D. All their life



23. Lemon sharks like to eat humans

- A. True
- B. False

24. Lemon sharks are an endangered species

- A. True
- B. False

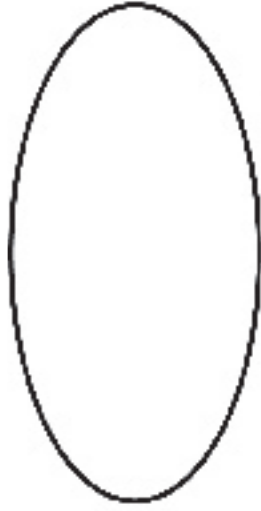


25. Where can you learn more about lemon sharks?

- A. Books
- B. Library
- C. Internet
- D. Coastal Universities
- E. All of the above

Answers:
1. D 2. C 3. B 4. D 5. B 6. A 7. C 8. B 9. D 10. A
11. B 12. D 13. A 14. E 15. B 16. C 17. B 18. C
19. C 20. E 21. B 22. C 23. B 24. B 25. E

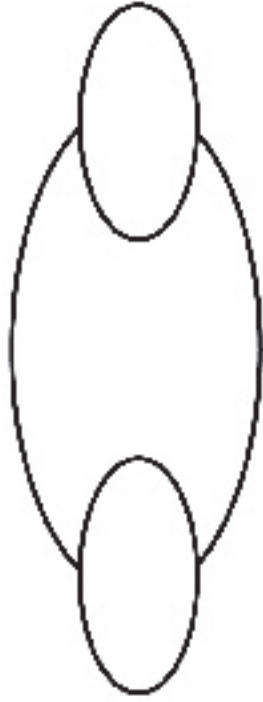
How to Draw Shelby



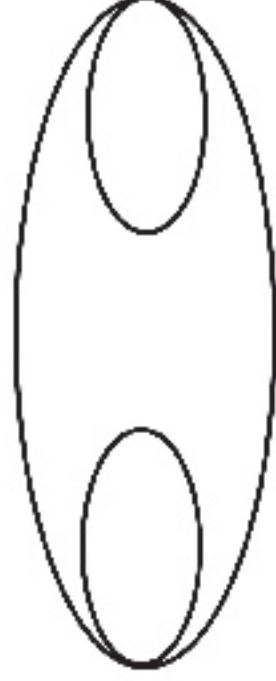
1



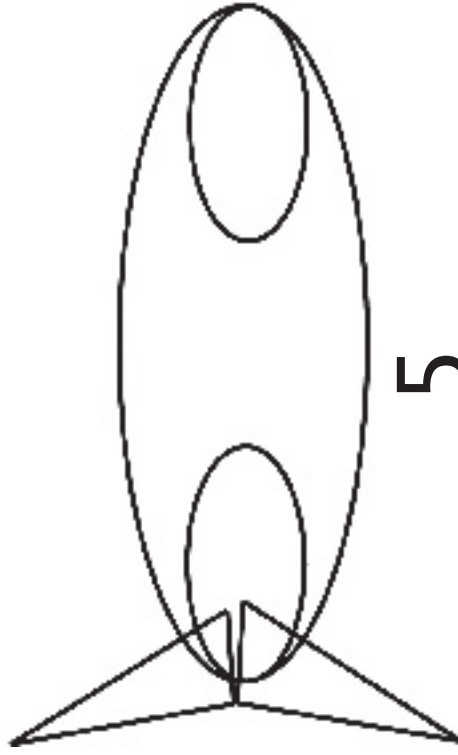
2



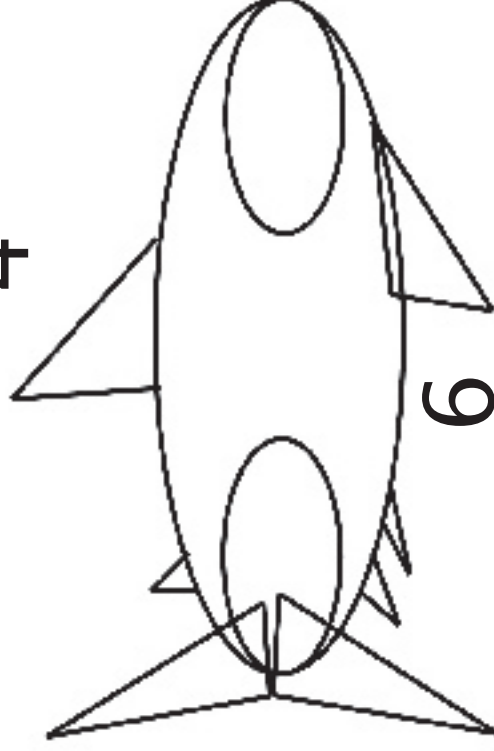
3



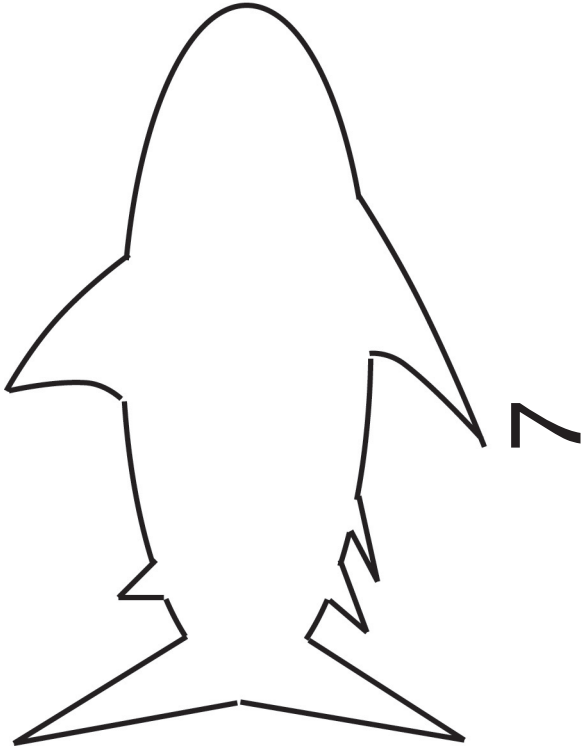
4



5



6



1. Draw a large oval

2. Draw a second oval at the front for the nose

3. Draw a third oval at the back for the back of the body

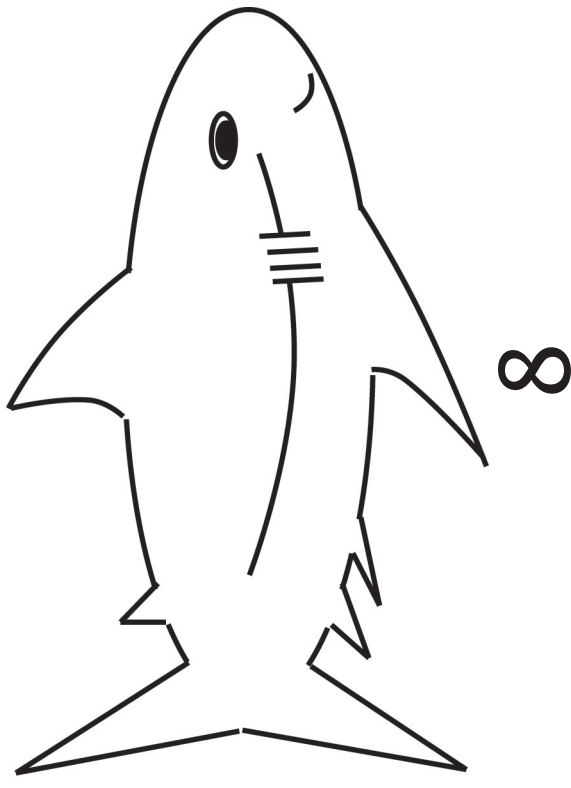
4. Connect the front and back ovals with a larger, outside oval. Erase, the first, inside oval.

5. Draw two triangles at the back for the tail

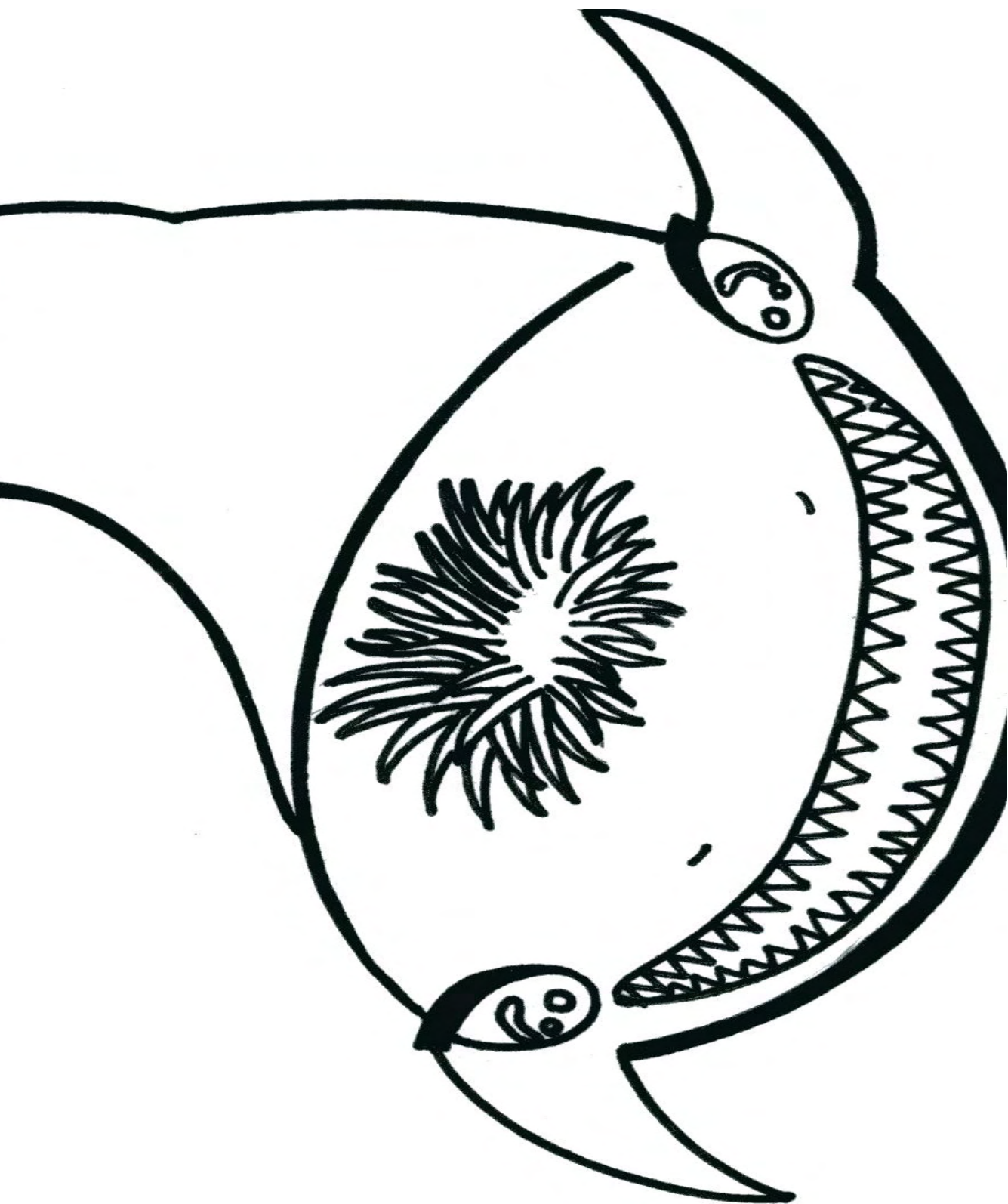
6. Draw one triangle at the top in the middle, one at the bottom in the middle, a smaller one at the top toward the tail, and two smaller ones at the bottom toward the tail. These are the fins.

7. Erase the lines connecting the triangles and between the triangles and the oval/body.

8. Draw a line running across Shelby's body from her back, small fins, to her eye. Draw in four perpendicular lines for her gills. Draw an eye out of a larger, outside oval, and a solid inside oval. Draw her mouth. Even add some teeth!







SHARK REFERENCE GUIDE

1

BOOKS:

1001 Facts About Sharks (2002). Joyce Pope. DK Publishing
ISBN: 0789484498.

Dolphins and Sharks (2003). Mary Pope Osborne & Natalie Pope
Boyce. Random House ISBN: 0375823778.

Eyewitness Shark (2004). Miranda Macquitty. DK Publishing
ISBN: 0756607248.

Life-Size Sharks and other Underwater Creatures (2004). Daniel Gilpin,
illus. by Martin Knowelden. Sterling Publ. ISBN: 140272537X.

JOURNAL ARTICLES:

"Great White Shark Attacks: Defanging the Myths." Jennifer Hile, Jan 2004.
http://news.nationalgeographic.com/news/2004/01/0123_040123_tvgreatwhiteshark.html

"Smart Sharks." R. Aidan Martin:
<http://www.bbc.co.uk/nature/animals/features/287feature1.shtml>

On Line Articles on Sharks and an Interactive Lab: This is an online treasure trove of articles on sharks from feeding habits to habitats. It's all here. <http://www.coralrealm.com/sharks/sharklab.html>

WEB SITES:

Great White Shark: http://www.greatwhite.org/hi_res2.htm

National Aquarium in Great Britain:
This has an excellent Q&A section for the numerous questions that children and adults may have about various types of sharks, as well as fish.
<http://www.national-aquarium.co.uk/databases/FAQsLibrary/index.asp?FAQCategoryID=&FAQID=797&SearchText=#question797>

SHARK REFERENCE GUIDE

2

All Types of Sharks:

<http://dsc.discovery.com/convergence/sharkweek/sharkweek.html>

Florida Museum of Natural History:

<http://www.flmnh.ufl.edu/fish/Sharks/sharks.htm>

TELEVISION SHOWS

Can't get enough of sharks? Stay tuned for Shark Week on THE Discovery Channel each summer.

If you can't wait that long, visit:

<http://dsc.discovery.com/convergence/sharkweek/sharkweek.html>

for games, puzzles, shark attack maps, and much much more on sharks!